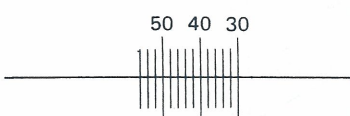
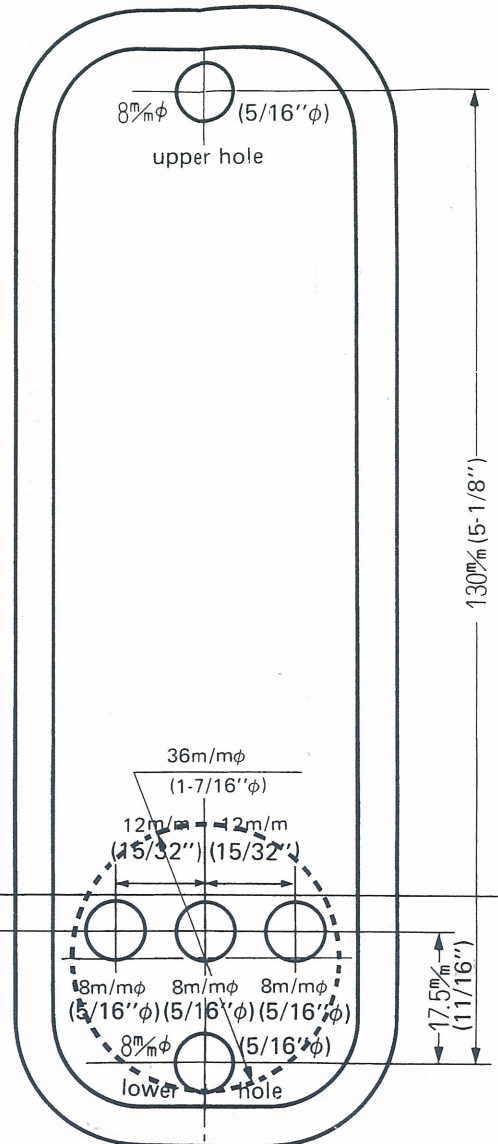


FOR BACK SET 70M/M (2-3/4")

Fold along the edge of door

folding line of "For Right Hand Door"

folding line of "For Left Hand Door"



Mark in slot for 22mm ($55/64''$) hole at center of door edge

Mark in slot for 22mm ($55/64''$) hole at center of door edge.



Back set 70mm (2-3/4")

Back set 70mm (2-3/4")

For Right Hand Door

For Left Hand Door